



# SERVICES

## INT Services

INT develops tailored solutions based on its own technologies, as well as custom applications and plugins for the major platforms. Our project teams employ a repertoire of state-of-the-art software engineering practices and tools to deliver solutions that exceed customer expectations. For complex projects, we effectively combine talent in data visualization, user interface, software architecture, data access, and optimization to ensure design and development success.

INT is a Schlumberger Ocean preferred partner and can develop your custom plugins for Petrel. INT can also create plugins for Paradigm and Landmark. With custom plugins, you can tailor the application to your need or leverage your own intellectual property within an industry platform.

### Benefits of outsourcing development to INT

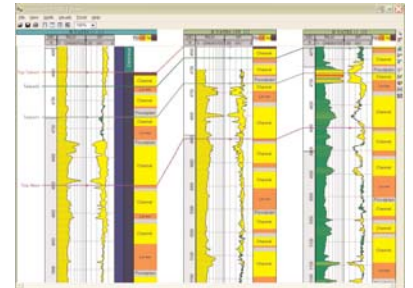
- Testing and review after each iteration dramatically lowers defect rates and improves software design for better maintainability
- Frequent releases increase feedback and mitigates risk of failure
- Iterative development cycle provides high project visibility and control, allowing customers to react quickly to changing requirements
- Constant feedback greatly improves the usefulness of the system by ensuring that features are implemented the way the customer wants them.

INT Services span the full life cycle of a software project, from solution design to development to application support. Focusing primarily on technologies relating to data visualization, analysis, and user interfaces.

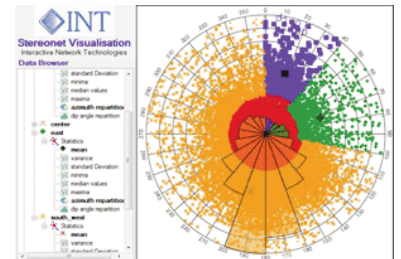
### Software Design and Programming

We understand that execution on time and within budget is critical to our customers' success, and utilize a highly flexible development methodology to provide clients with top-notch solutions quickly and effectively.

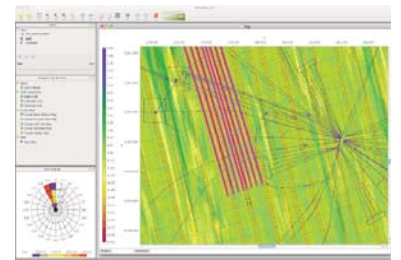
INT's approach accepts that most software projects evolve, and mitigates many risks inherent in software development by breaking projects into small iterations in which requirements, design, development, and testing occur continuously. The resulting product more accurately fits the customer's needs, rather than representing what they were able to specify at the beginning of the project.



multi-well display



INTStereonet plug-in for Petrel



NavQC plug-in for INTViewer

Most projects follow the following procedure for each release of a product.

***Inception - Customers meet with INT to discuss the scope of the project***

Initial requirements are gathered. We work closely with our customers to learn about their preferred practices and business objectives, ensuring that we thoroughly understand all project goals. Requirements are decomposed into individual features and entered into INT's task management system. It is not necessary to define all the requirements at this time

Of course, if customers provide us with a detailed project specification or request for proposal (RFP) at the outset, we proceed immediately to elaboration of the development plan.

***Elaboration - INT assigns estimates and a development plan is created.***

INT examines each feature and generates an estimate of the project size, work effort, and software development cost. Customers assign priorities to features, and a development plan is created identifying major milestones, deliverable, and a rough timeline for the project implementation. A proposal document is sent to the customer for review and approval before proceeding further.

***Construction - Work begins and continues to completion.***

Development progresses in small increments called iterations. An iteration consists of a series of steps performed over a short timetable, including: 1) Picking the features to implement in this iteration, 2) Resolving outstanding bugs, 3) QC and acceptance testing, 4) Delivery for customer feedback.

Customers might change requirements or priorities based on information gained from each iteration. By adding features, the product can be enhanced. By removing features, earlier deadlines can be met.

***Transition - Product is deployed or moves into support phase.***

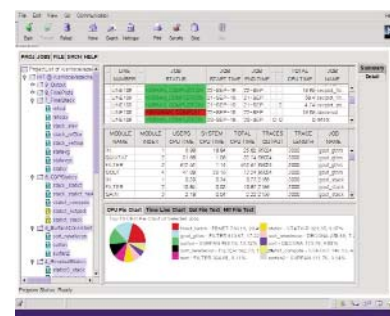
If future releases are required, the customer can begin the process again with more requirements. Otherwise, it can be moved into a maintenance state.

**Education and Training**

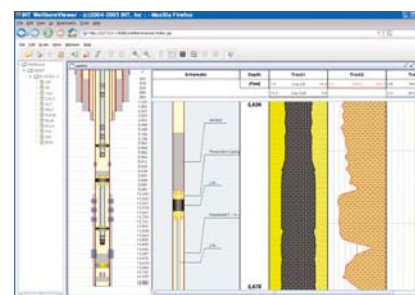
INT strives to help customers achieve a level of technical self-sufficiency. With this in mind, we offer a comprehensive series of training programs for our clients and distributors. Classes are designed to educate clients in underlying concepts as well as to develop proficiency in applying our software and methodologies to particular business needs. Each course provides extensive hands-on experience and can be tailored to emphasize client priorities.

**Support**

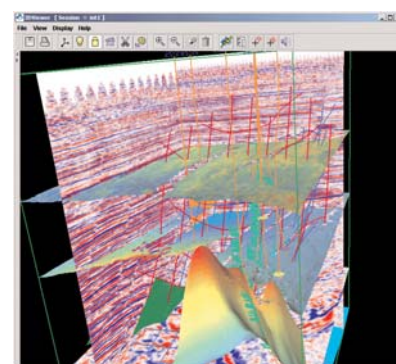
At INT, we understand the life cycle of a software project and are ready to help you support your application after it has been delivered. Because each software project is unique and each customer has different requirements, we can offer a level of support tailored for your needs.



Modern GUI for legacy application



Web display of log and well schematic data



3D visualization of subsurface data

