

J/CarnacPro Java 2D™ Graphics Toolkit for Sophisticated Visualization

J/CarnacPro enhances the capability of Java 2D™, providing a rich and powerful environment for development of graphical applications. Designed to integrate with Java and Swing™ architectures, J/CarnacPro is the optimum solution for building Internet-enabled user interfaces and cross-platform, graphics intensive solutions for data visualization and analysis.

J/CarnacPro provides an infrastructure for developing high-level components and can be used to create industry specific components for scientific visualization and business charting, process control, GIS applications, and financial data displays. The J/CarnacPro environment serves as a foundation for many of our own component suites.

Unique Advantages

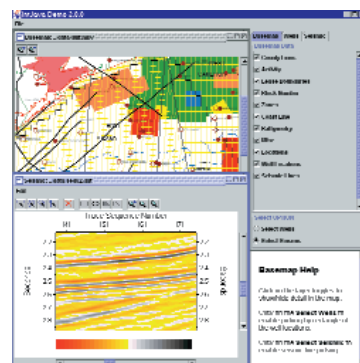
J/CarnacPro provides a flexible and extensible architecture to enable rapid development of graphical displays. By alleviating the need to build a graphics system from scratch, J/CarnacPro allows the developer to concentrate on data and the application itself. Special attention has been given to maximizing performance from Java 2D, including attribute caching, advanced damage repair control, extensive buffering control, dynamic rendering of complex shapes, and more.

J/CarnacPro provides a modeling management system based upon layers, allowing programmers to organize data in a manner that best suits the problem. Layers can overlay one another, be added and removed dynamically, and be manipulated to give the application complete control over data display.

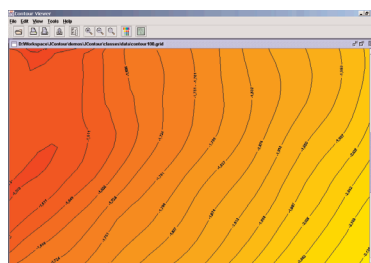
An underlying toolkit should not limit the capabilities of advanced users, so J/CarnacPro has been designed to be extensible. Programmers can create their own graphics entities and attributes. For instance, it is easy for developers to create custom shapes, provide a special editing handler for shapes, or customize the axis object to generate their own labels.

FEATURES

- Extensive library of primitive shapes
- All Java 2D attributes supported for shapes
- Variety of shape containers - lists, arrays, quad-tree, dynamic
- Extensive support for selection, scaling, rotation, and geometry editing
- Attribute editors, clipboard, and drag & drop support
- Layering of shapes within a model; Dynamic manipulation of layers
- Transformation - full 2D linear transformation per view
- Support for composite plots with multiple axes and annotation area
- Advanced printing interface component with print preview; CGM optionally available
- J/CarnacPro is available on all platforms that support JDK 1.4.2 or higher.



Geoscience labels



Contoured surface application